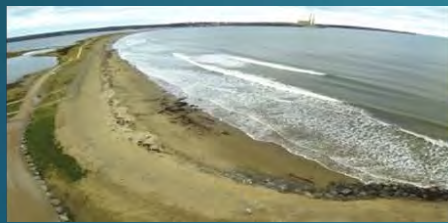


Atlantic Climate Adaptation Solutions Association (ACASA)

Decision Key on Planning and Engineering for the Selection of Sustainable Coastal Adaptation Strategies in Rural Communities



Vincent Leys
Coastal Engineer
5 March 2015



Atlantic Climate Adaptation Solutions Association (ACASA)

Decision Key on Planning and Engineering for Coastal Adaptation

NRCan

All 4 Atlantic Provinces

Project Lead



Decision tree,
geomorphology



Land-use
planning



CBCL LIMITED
Consulting Engineers

Engineering



Community
Consultation

Risk Sciences
International

Web-based
tool



Objective: improve local capacity for adaptation to sea level rise



Flooding / erosion problems within local community

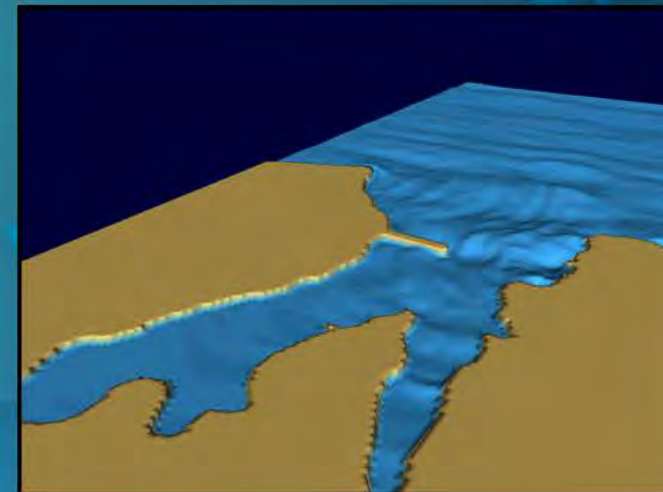
Web-based guidance tool using multiple choice questions

Range of potential planning and engineering options



- Shoreline type
- Elevation
- Geology
- Existing land use
- Exposure

.....



Timeline

Done (2014)

- Guidance documents (40+ engineering and planning tools included)
- Expert review of planning and engineering tools
- Selected representative communities for testing
- Preliminary testing at a few communities

Pending (to March 2016)

- Compilation of unified guidance pdf
- Web-based interface
- Final testing with communities
- French translation



Environment Industry--Research Connector

SmartAtlantic Inshore Weather Buoy Network



Environmental Monitoring, Environmental Prediction, Emergency Response Planning R&D

5 March 2015



SmartAtlantic Alliance

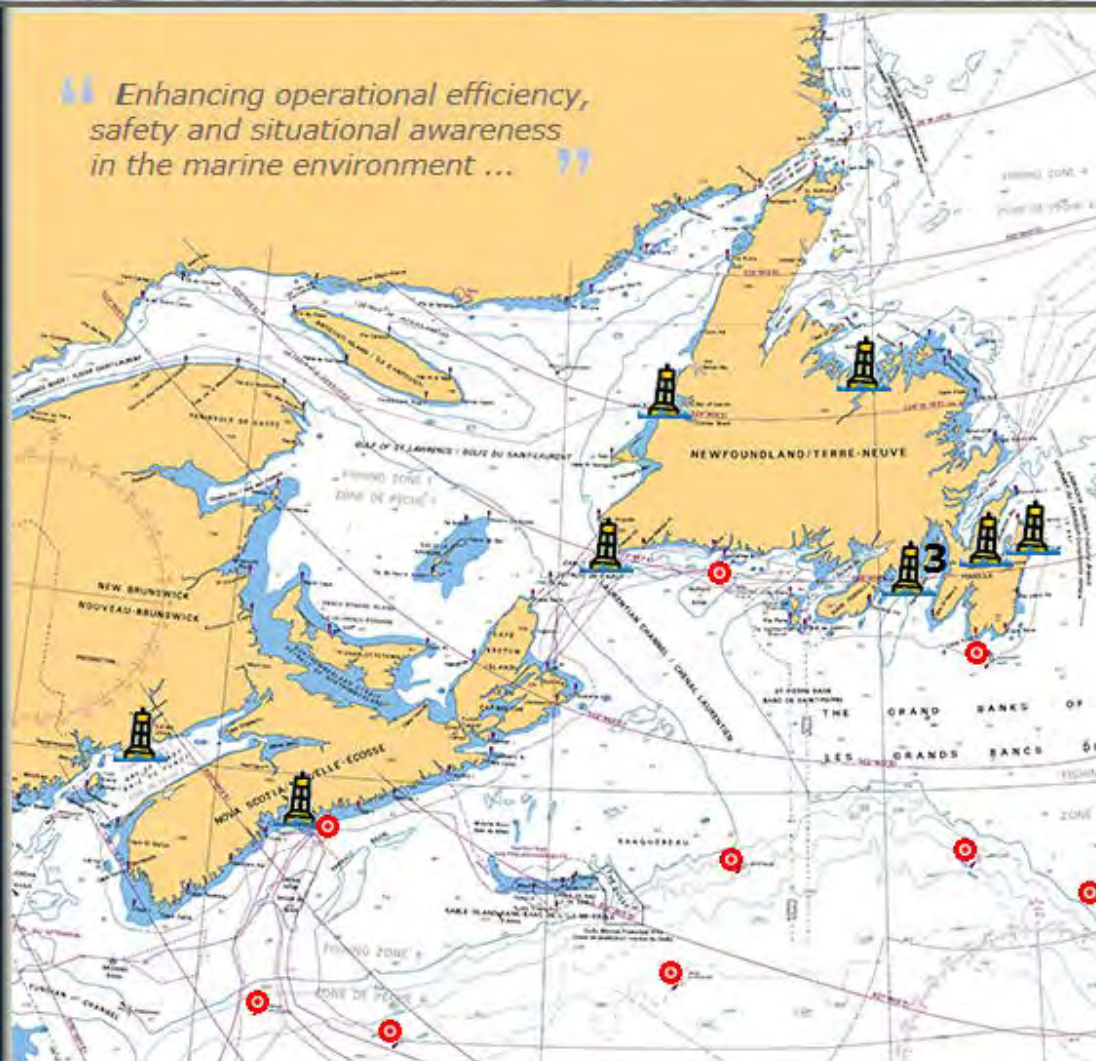


About the
SmartAtlantic Alliance

Terms of Use

Contact Us

Enhancing operational efficiency,
safety and situational awareness
in the marine environment ...



Better
Information
... Better
Decisions

SmartAtlantic Notices

29.Jan.2015

The Red Island Buoy has been removed from service for a short period of time so that we may perform regular maintenance. We hope to have the buoy back in service in the next couple of weeks. We apologize for any inconvenience that this may cause.

26.Jan.2015

We are currently experiencing data outages for wind speed and direction from our Mouth of Bay buoy and as well we are experiencing

An Initiative of
the Marine Institute
of Memorial University
of Newfoundland:


MARINE INSTITUTE


MEMORIAL
UNIVERSITY

